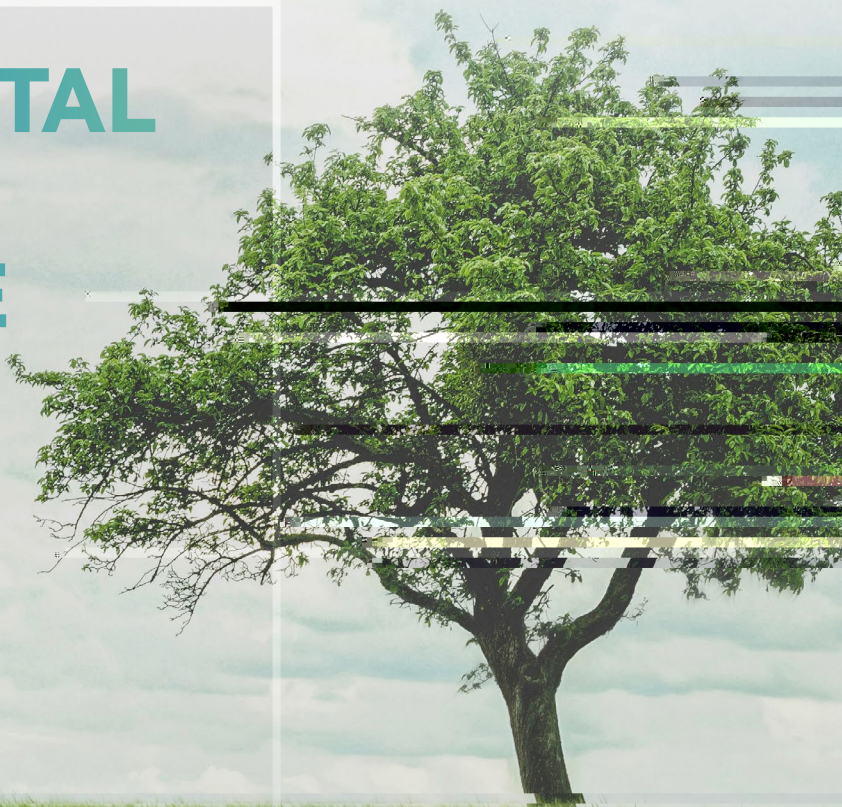
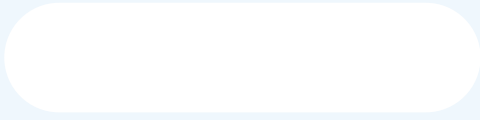


2023

ENVIRONMENTAL SOCIAL & GOVERNANCE REPORT

环境、社会及公司治理(ESG)报告





2023

2023 1 1 2023 12 31

2030

SDGs

GRI

Standards

CASS-ESG5.0

GB/T36001-

2015

ISO 26000

2010

2 —

<https://www.zj-innolight.com>
cninfo.com.cn

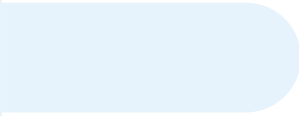
www.

info@zj-innolight.com

0535-8573360

InnoLight Technology Pte. Limited (Thailand)





02

03

59

60

67

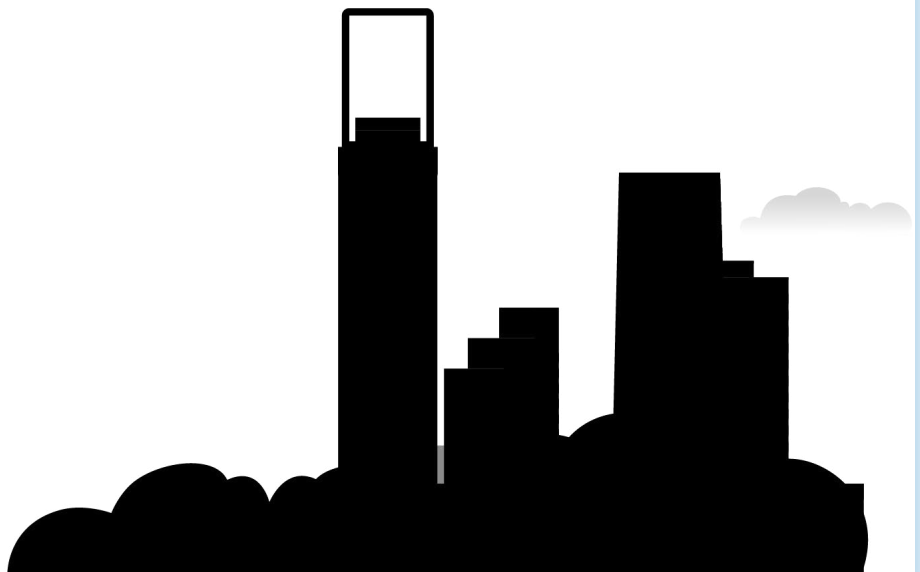
69

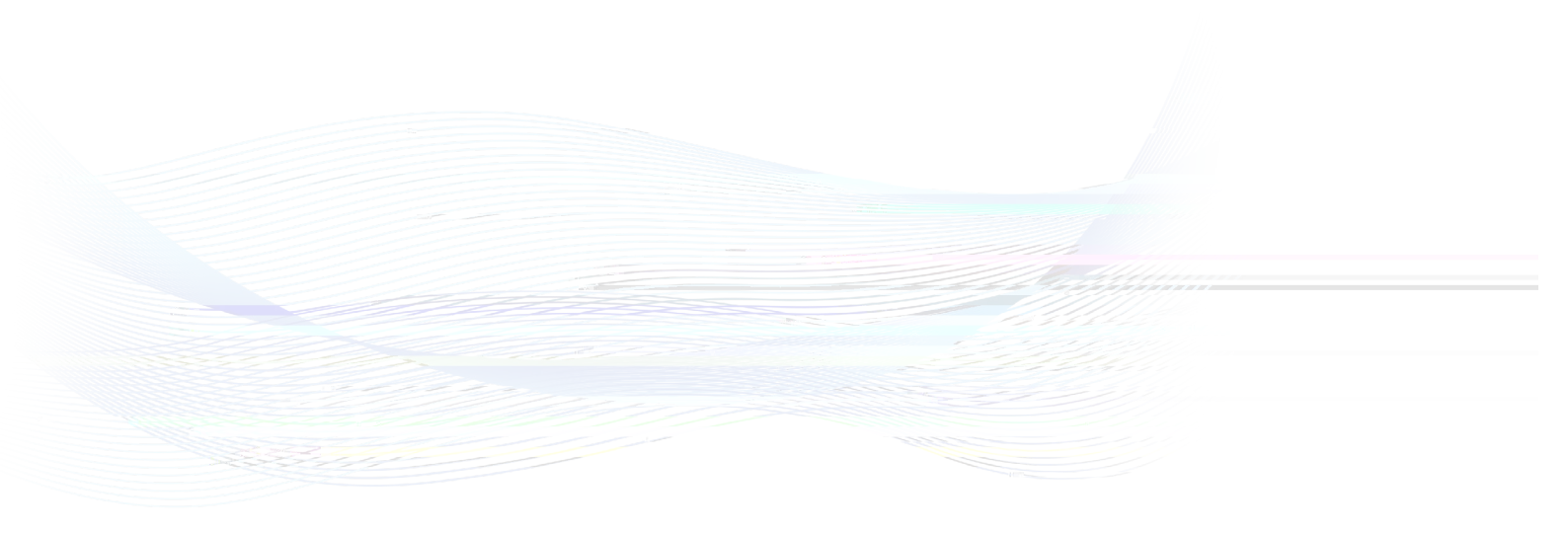
01

03

.....	08
.....	11
.....	12
.....	14
.....	16
ESG	16

.....	48
.....	50
.....	51
.....	54
.....	56
.....	58





SZ 300308









				0-3	3-6				
					✓	✓			
					✓	✓			
				✓				✓	✓
					✓			✓	✓
				✓				✓	✓
				✓		✓			
				✓				✓	✓

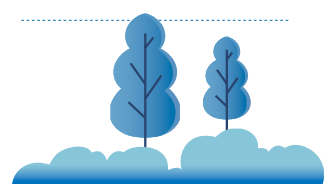


7

4

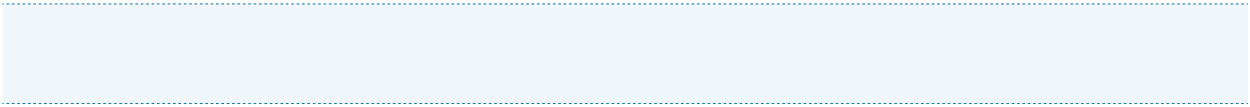
2

57.14%

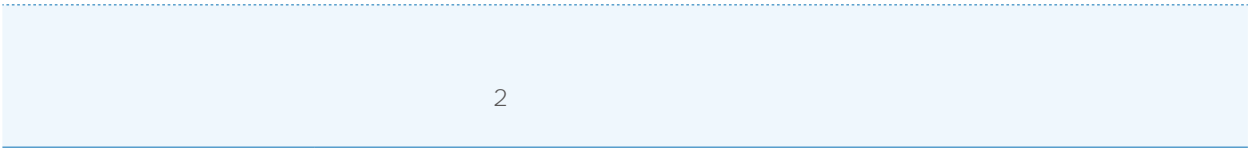




3



2



2

8

3

1



5

10

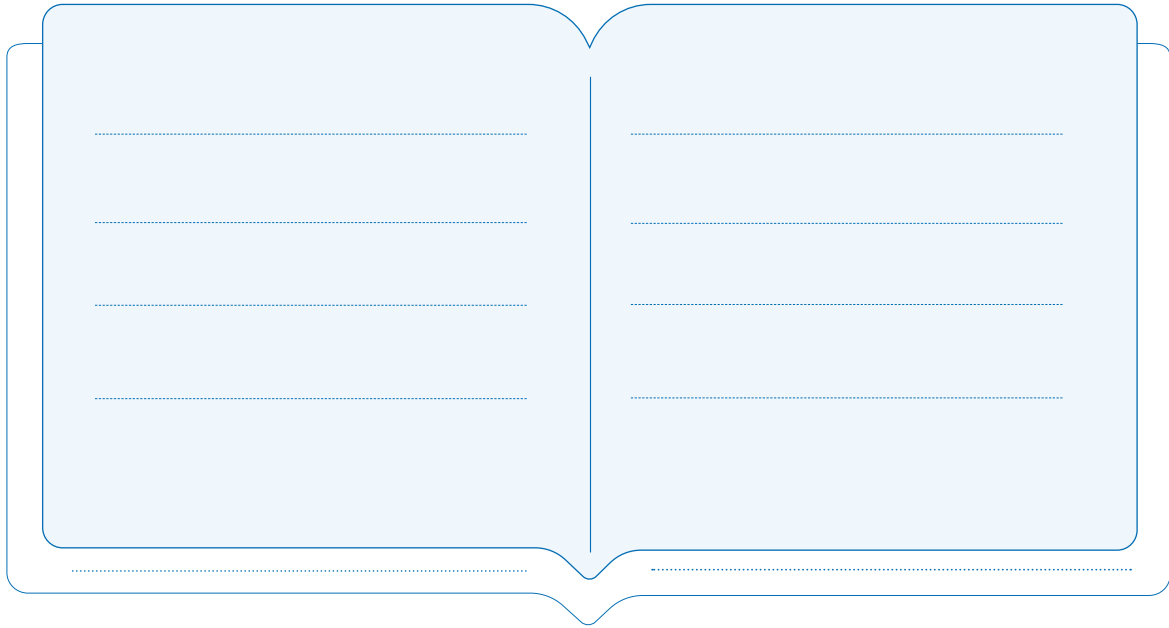
10

28

57

37





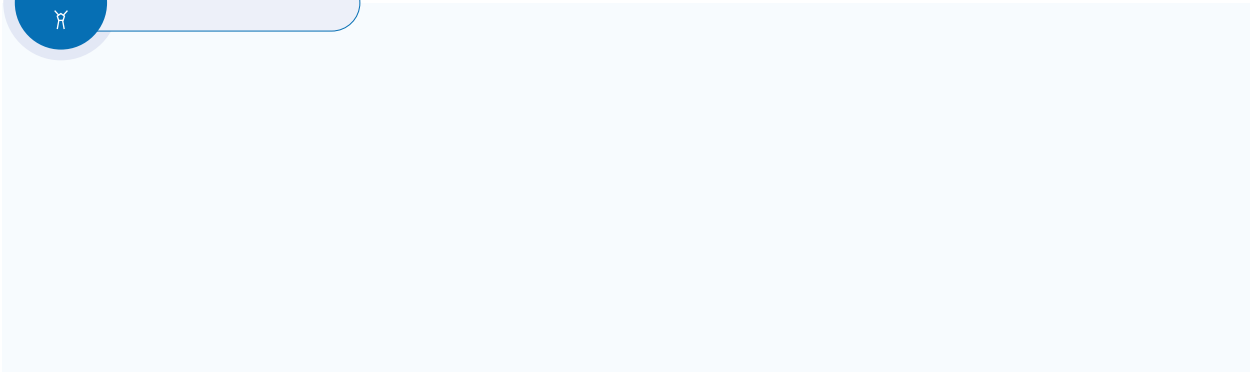
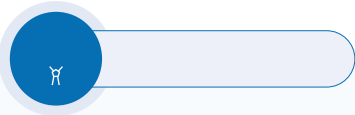
228

222

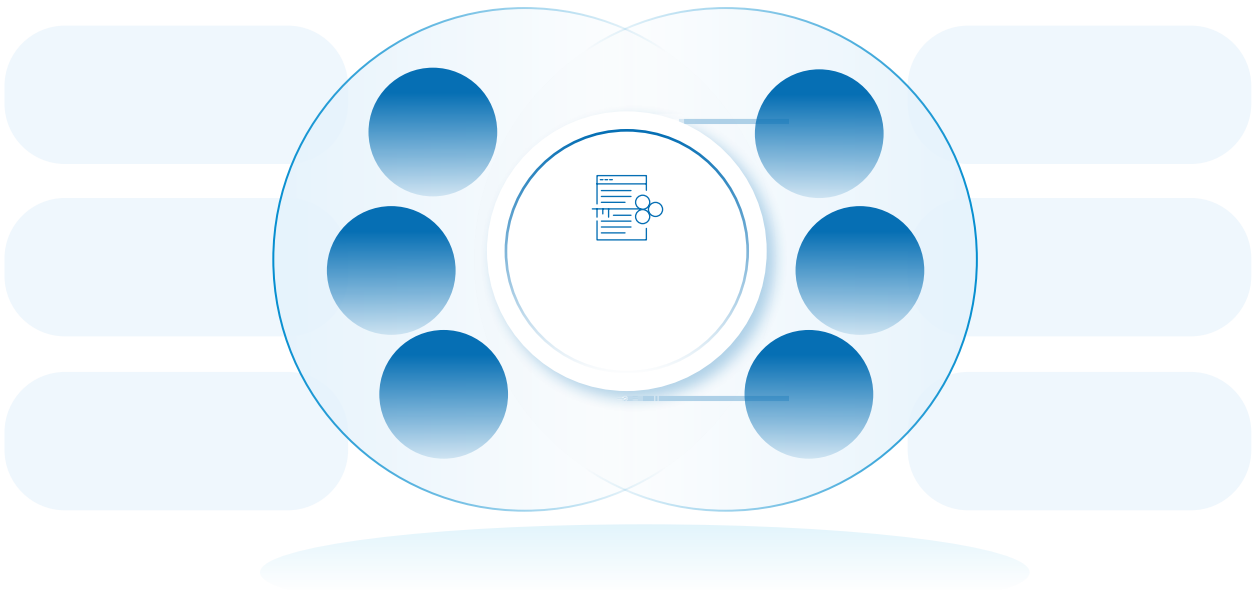
6

A





100%

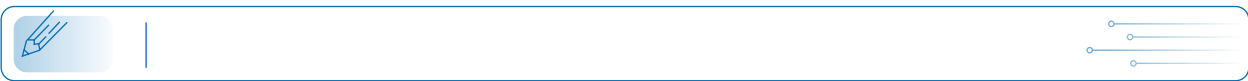
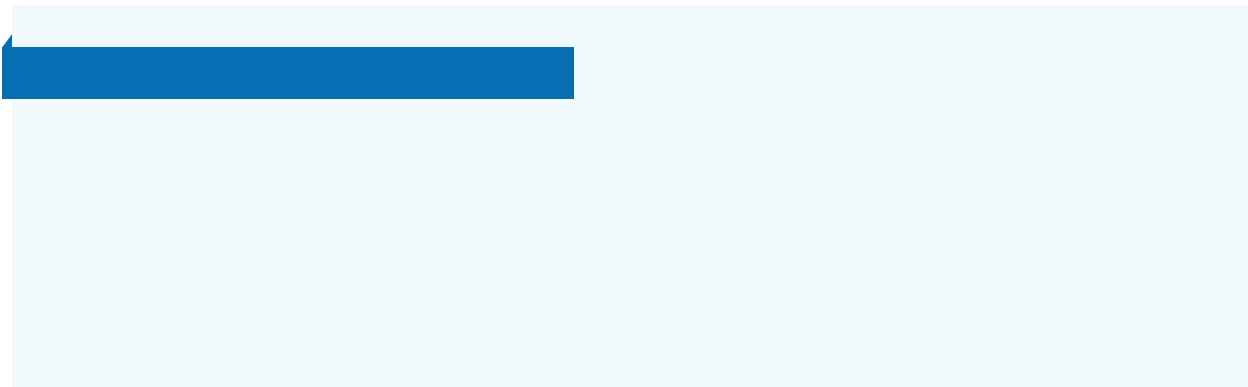
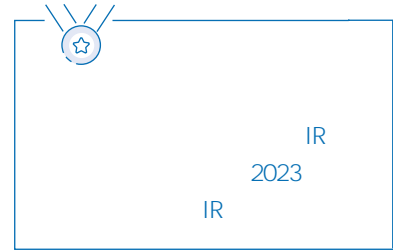


86669288-8999

anti_fraud@innolight.com

0512-





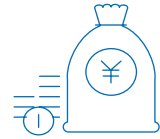
2023 5

5%5

2019-2023

8.32

9.1831



%			
2019	38.16	13,604.75	5,990.59
2020	9.97	-	8,627.50
2021	19.91	-	17,461.82
2022	76.73	78,227.04	15,689.92
2023	16.28	-	35,386.21

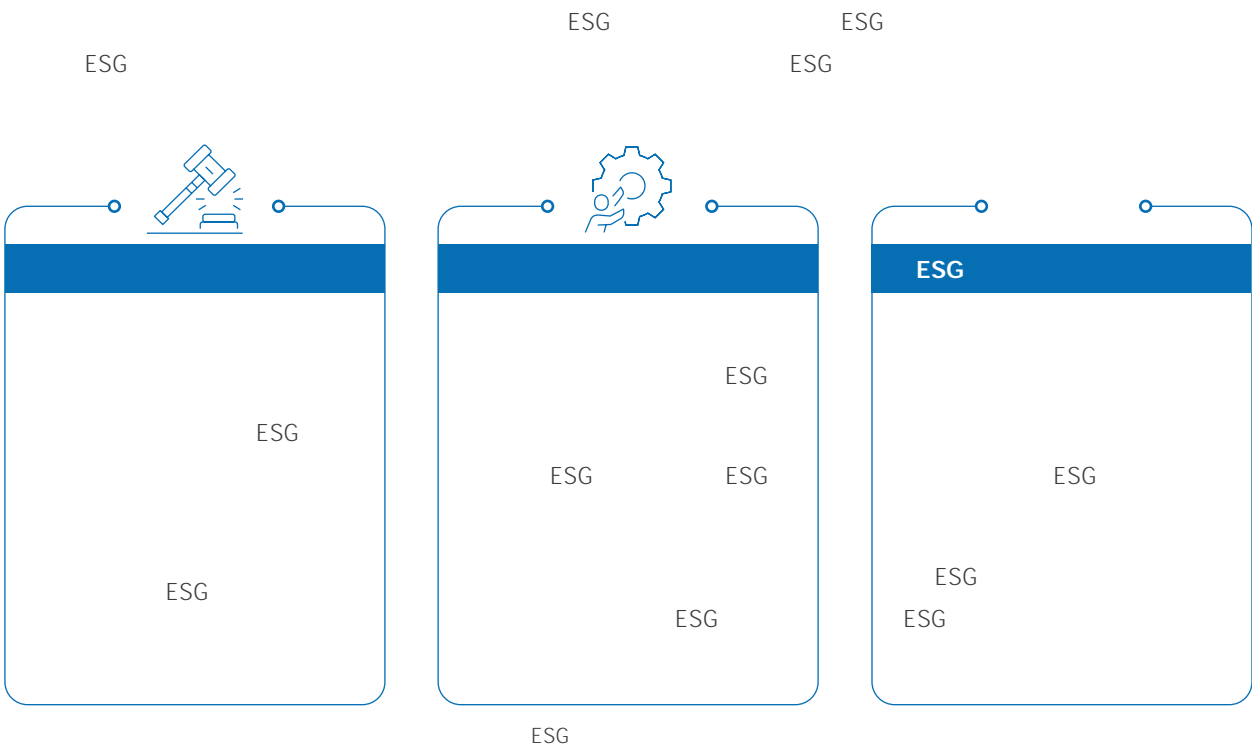
2017-2023

2023

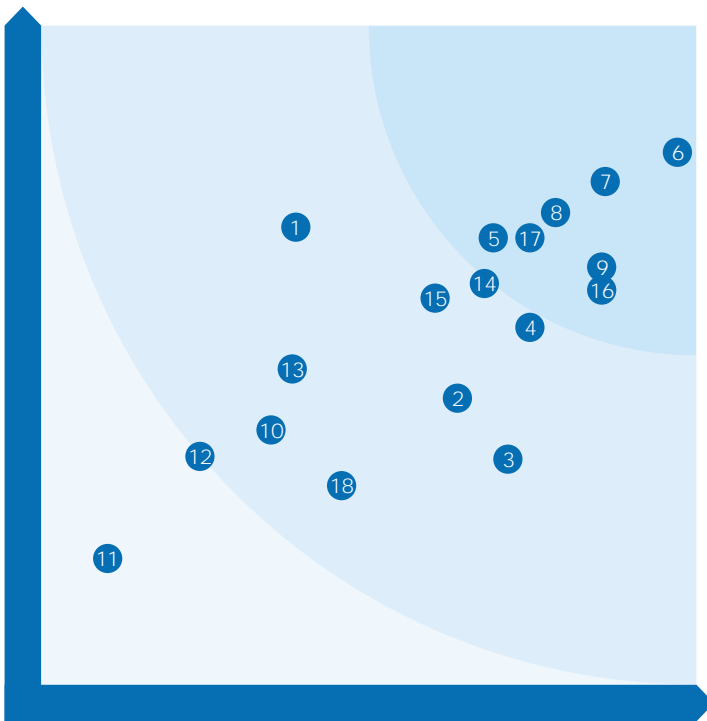
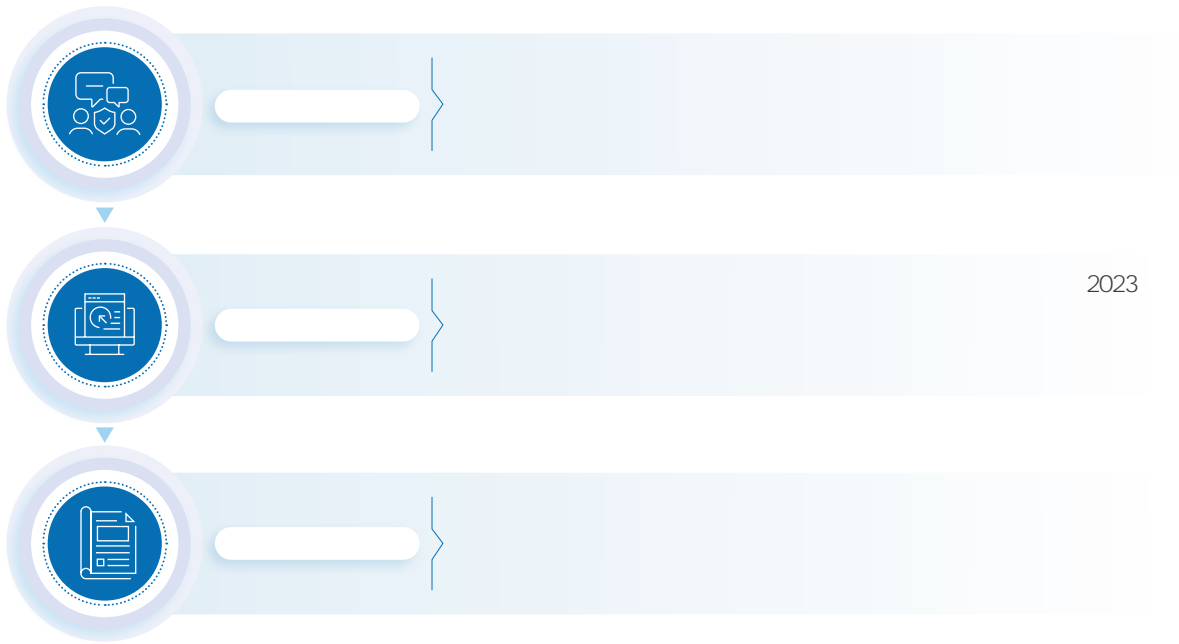


PCT	40	93
	65	332
	8	59
	11	5

ESG







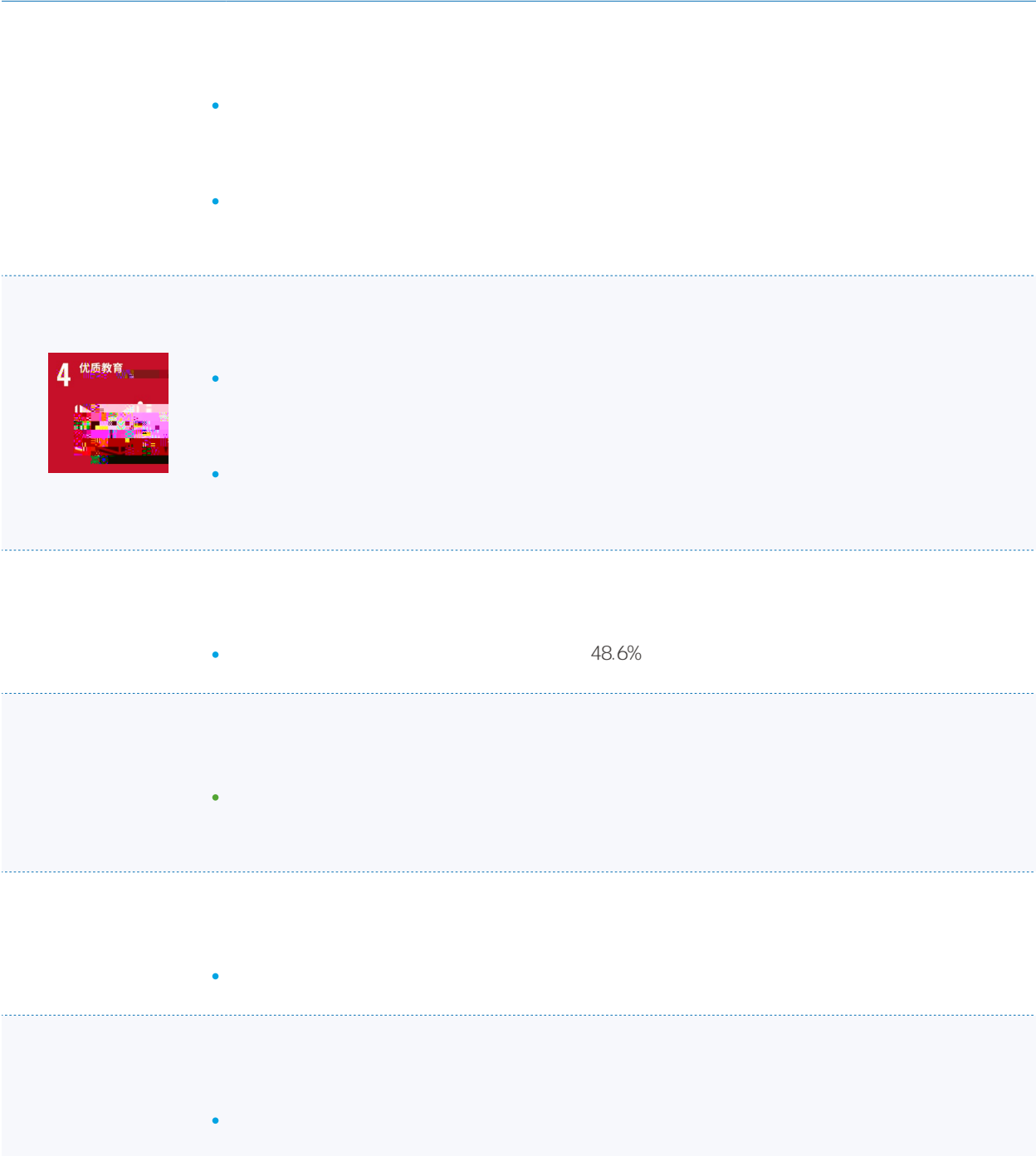
- 1
- 2
- 3
- 4
- 5
- 6
- 7
- 8
- 9
- 10
- 11
- 12
- 13
- 14
- 15
- 16
- 17
- 18
- 19



SDGs

2030

UN SDGs 2030



-



-



-

RoHS REACH

-

-

-



-

-



.....	22
.....	25
.....	28
.....	31
.....	34
.....	45

1,329 80,938.89 79,216.83 2.17%

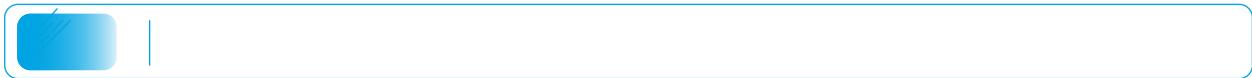
[Blue bar]

-
-

[Blue bar]

-
-
-
-
-

QSFP-DD MSA	QSFP-DD Hardware Specification for QSFP DOUBLE DENSITY 8X PLUGGABLE TRANSCEIVER 7.0			
SFP-DD MSA	SFP-DD Hardware Specification for SFP DOUBLE DENSITY 2X PLUGGABLE TRANSCEIVER 5.2			
QSFP MSA	QSFP-XD Specification_Rev 1.0			
100G Lamda MSA	400G-ER4-30 Specification_Rev 1.0			
OpenZR+ MSA	OpenZR+ MSA Specification_Rev 3.0			
CCSA	SFP	SFP+	1	8.5Gbit/s
	10Gbit/s		1	SFP/SFP+/SFP28



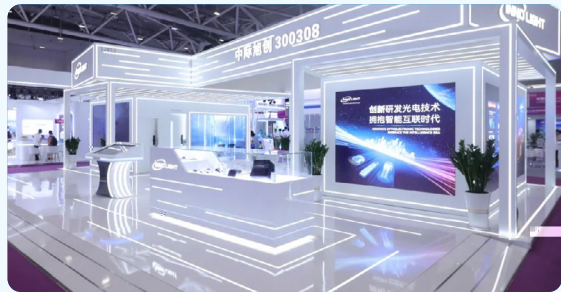


2023 9

24

‰

5G



"

"



ECOC



2023 10

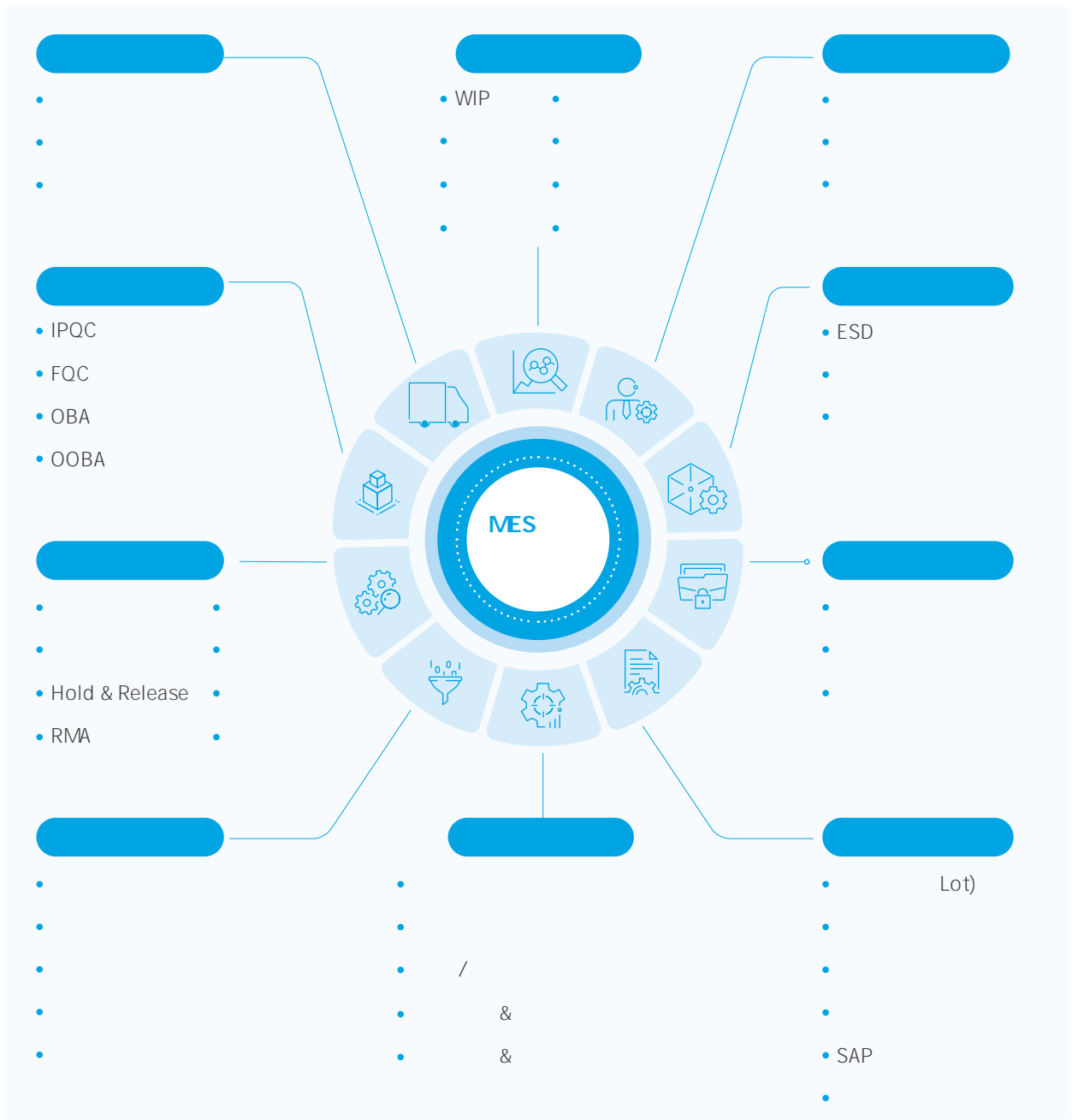
49 ECOC

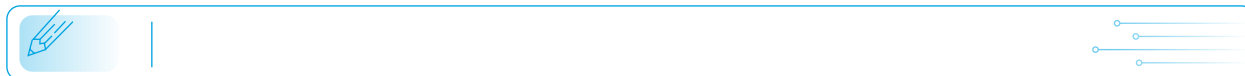
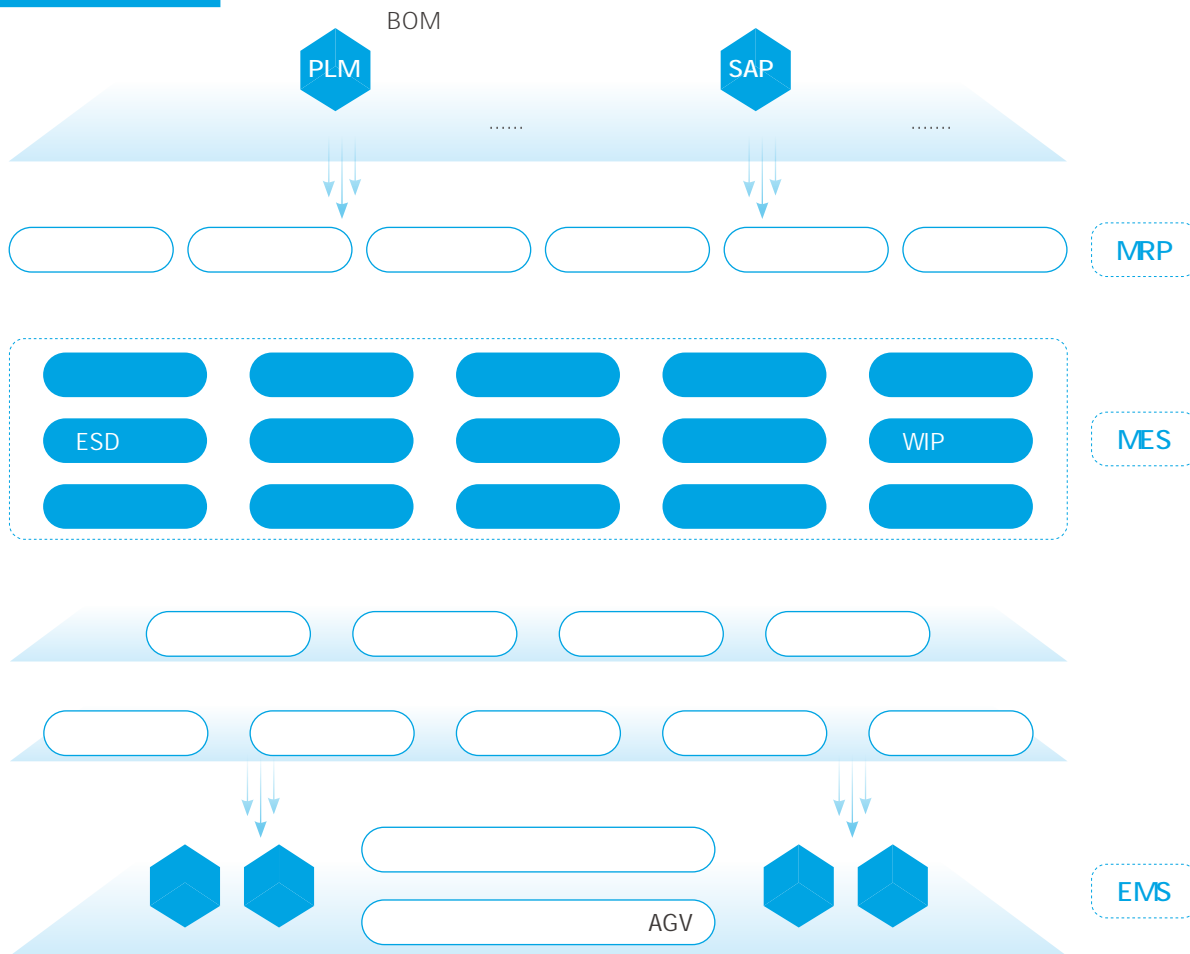
-200G PAM4



ECOC

MES







TEC



TEC lite pro

1,050



TEC lite pro



FA



TRX FA

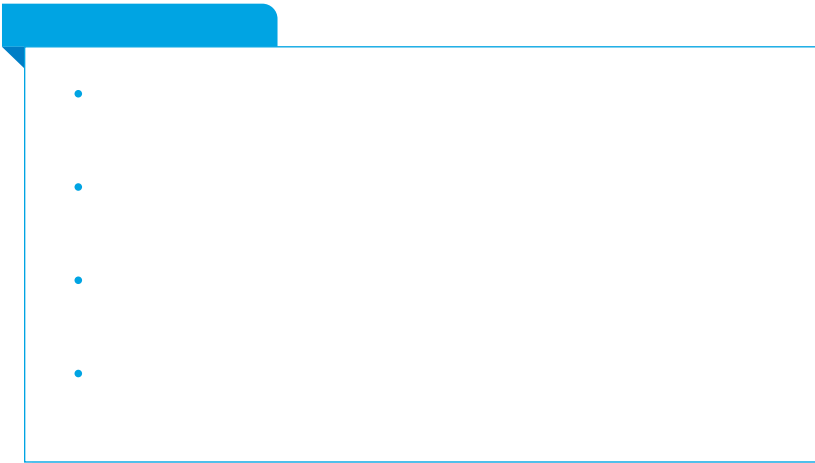
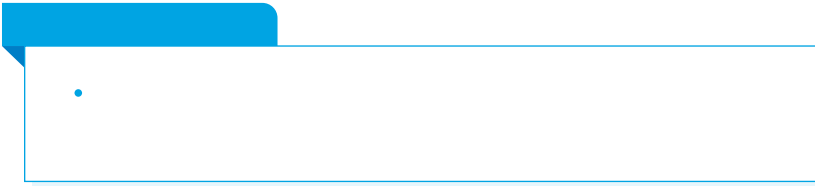
TRX FA

2023 4

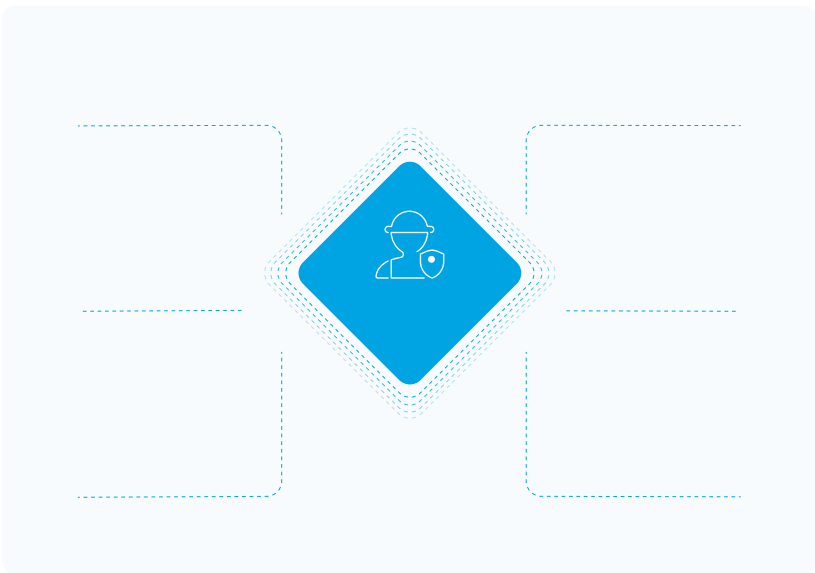
ISO 27001



ISO 9001



ISO 9001



286





DQE



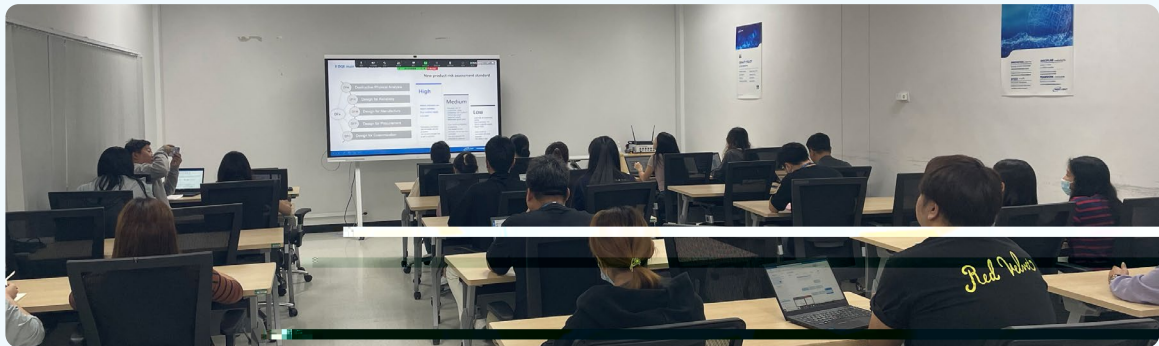
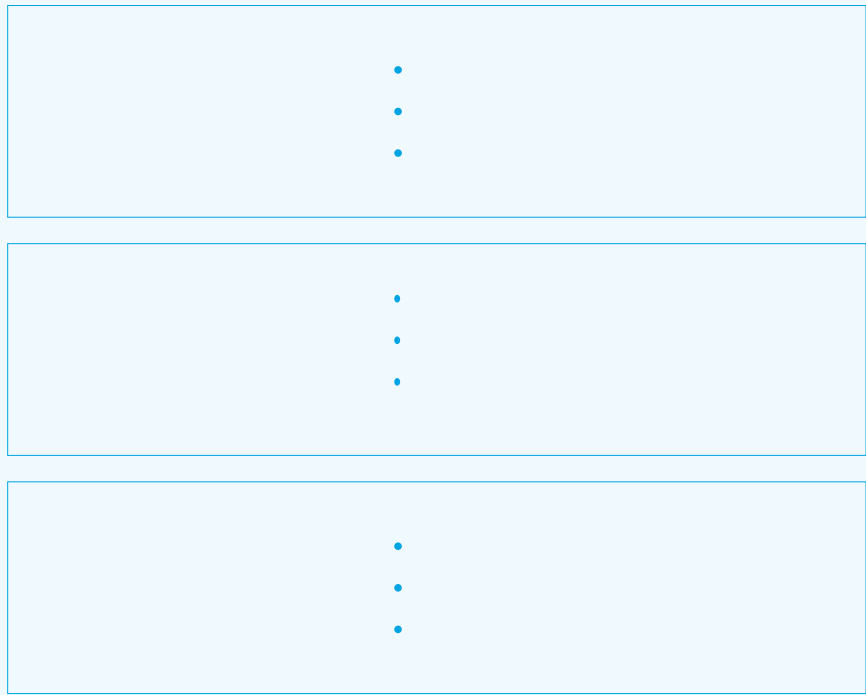
DQE
(DPA)

DFC

DFP

DFM

(DFR)

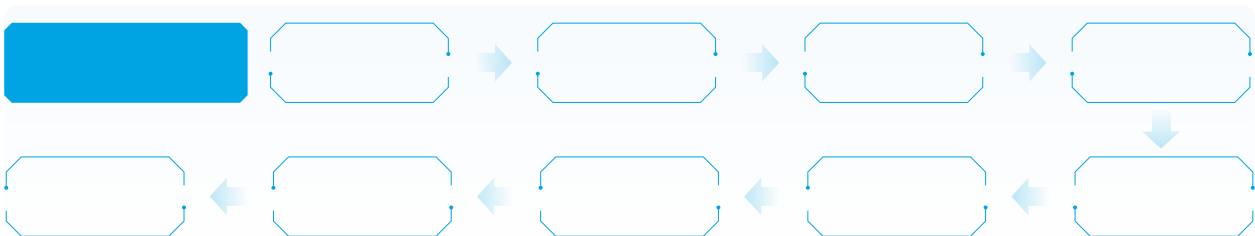
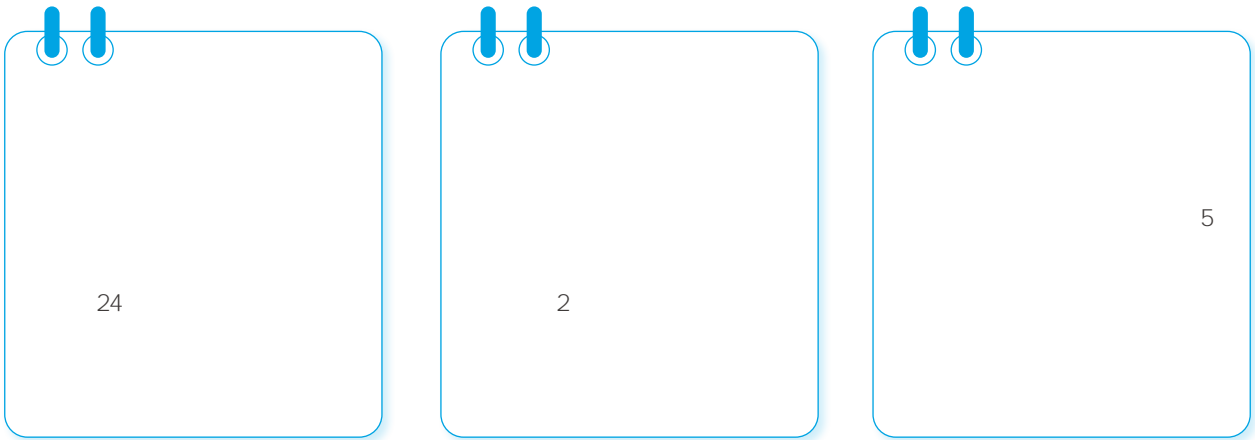
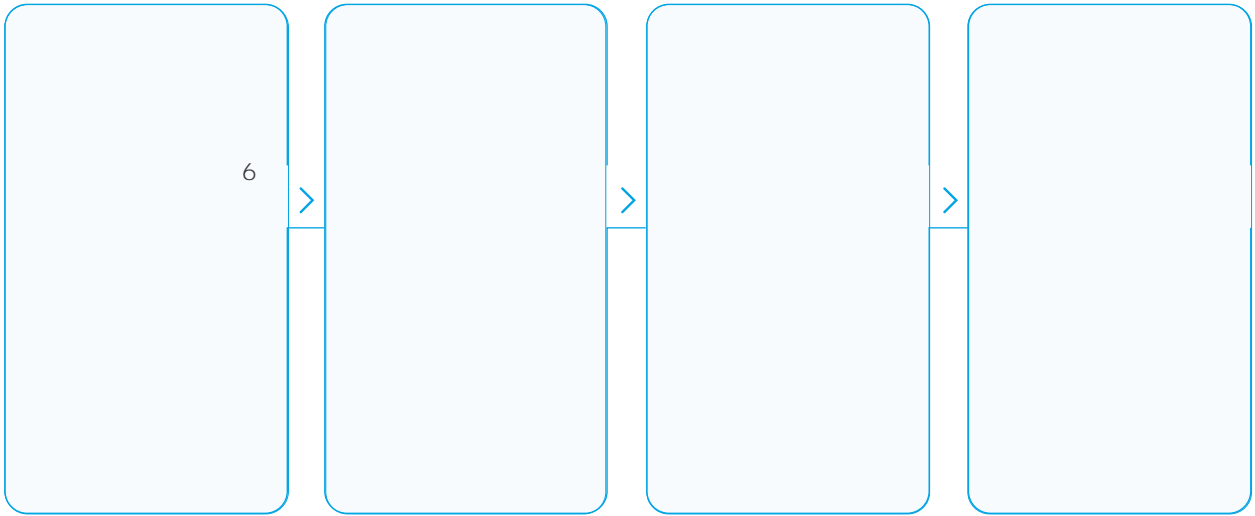


DQE

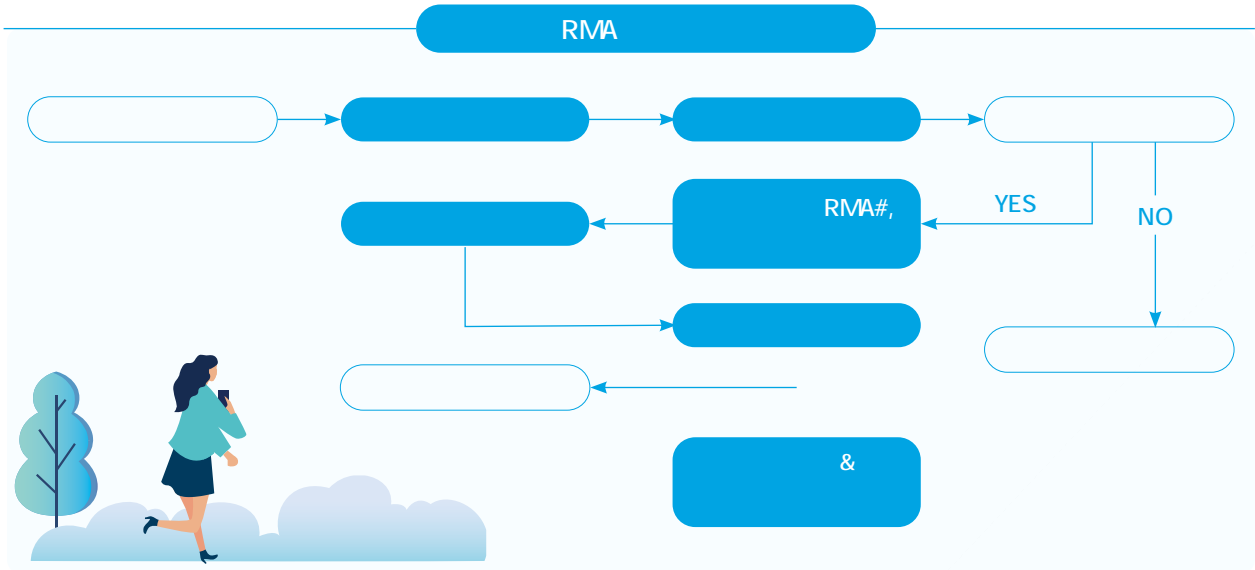


IOC





RMA

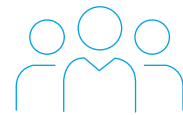


5



90.5 100

95 100



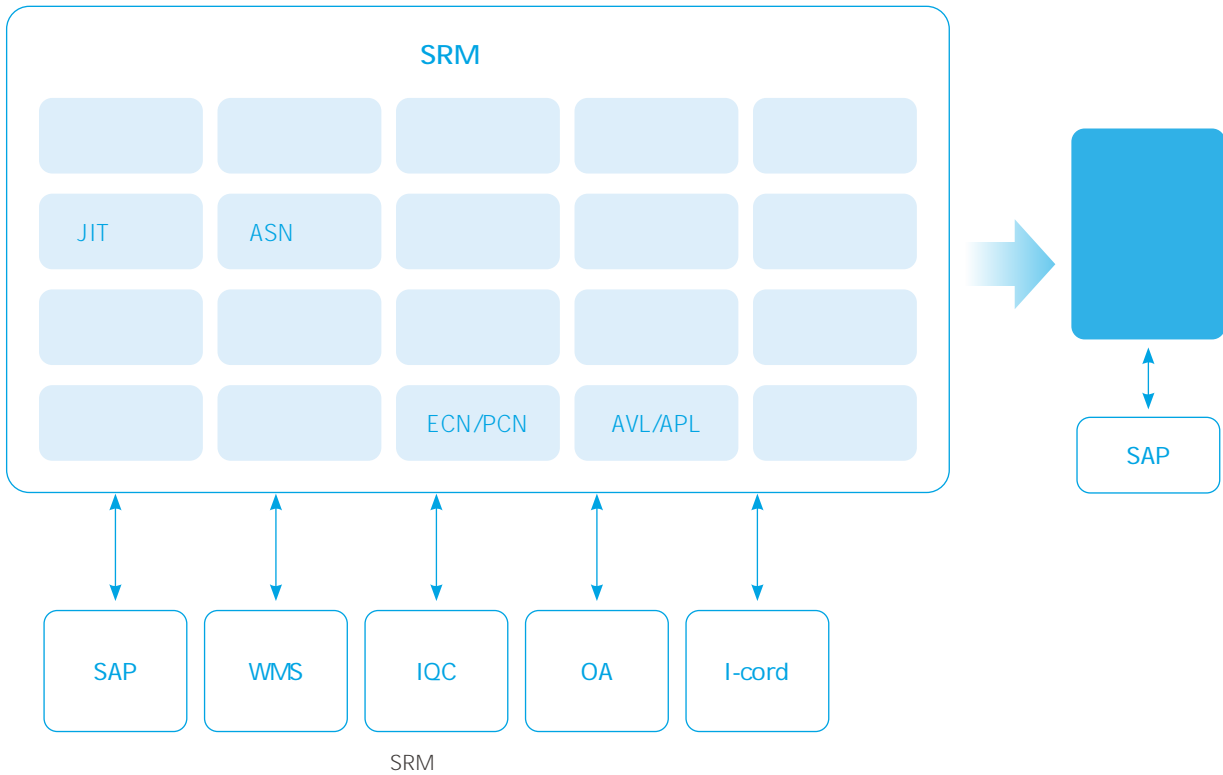
RBA

100%

100%

SRM

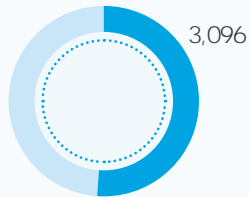
100%



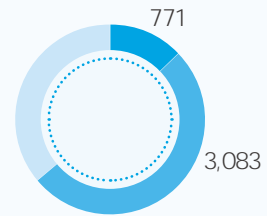


6,029

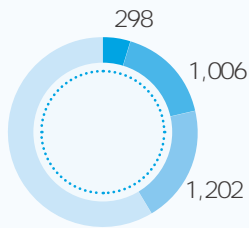
2,933



2,175



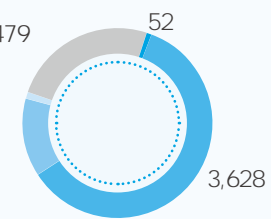
3,523



1,479

77

793

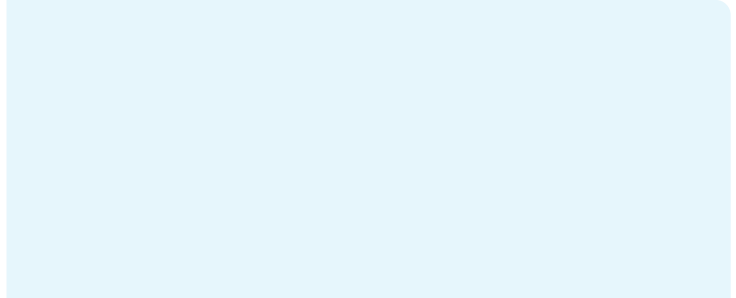


100 %

19

1,816

30 %



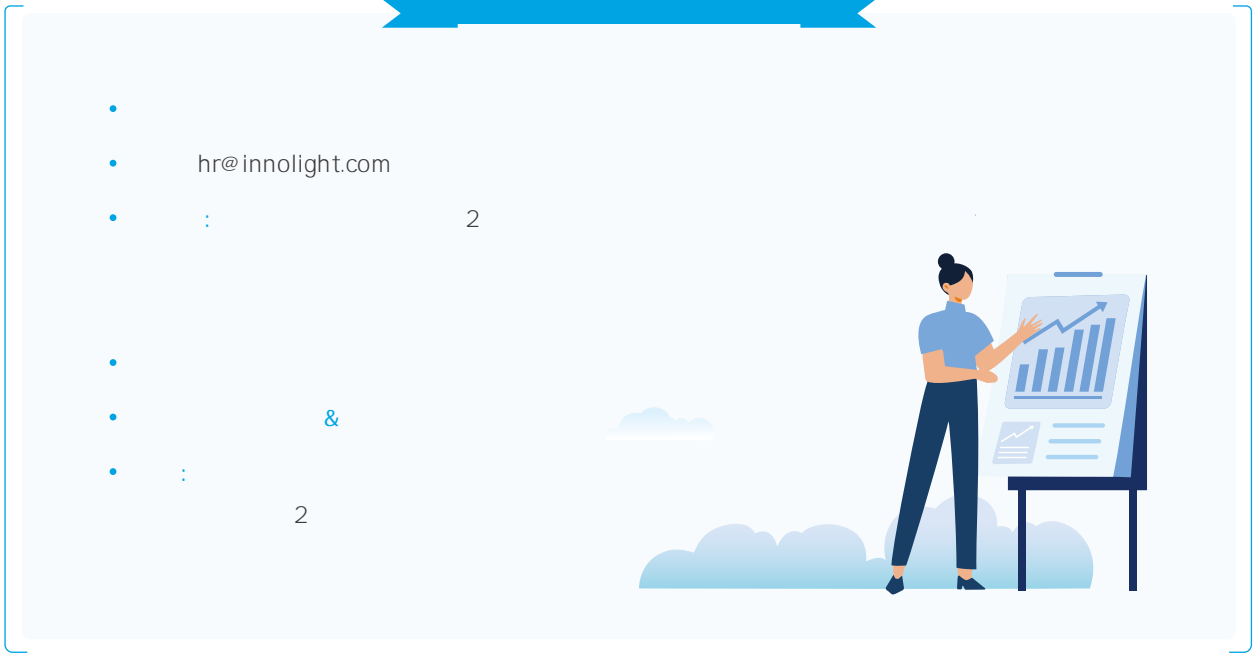
17,364

35,438

DL

IDL





Q12

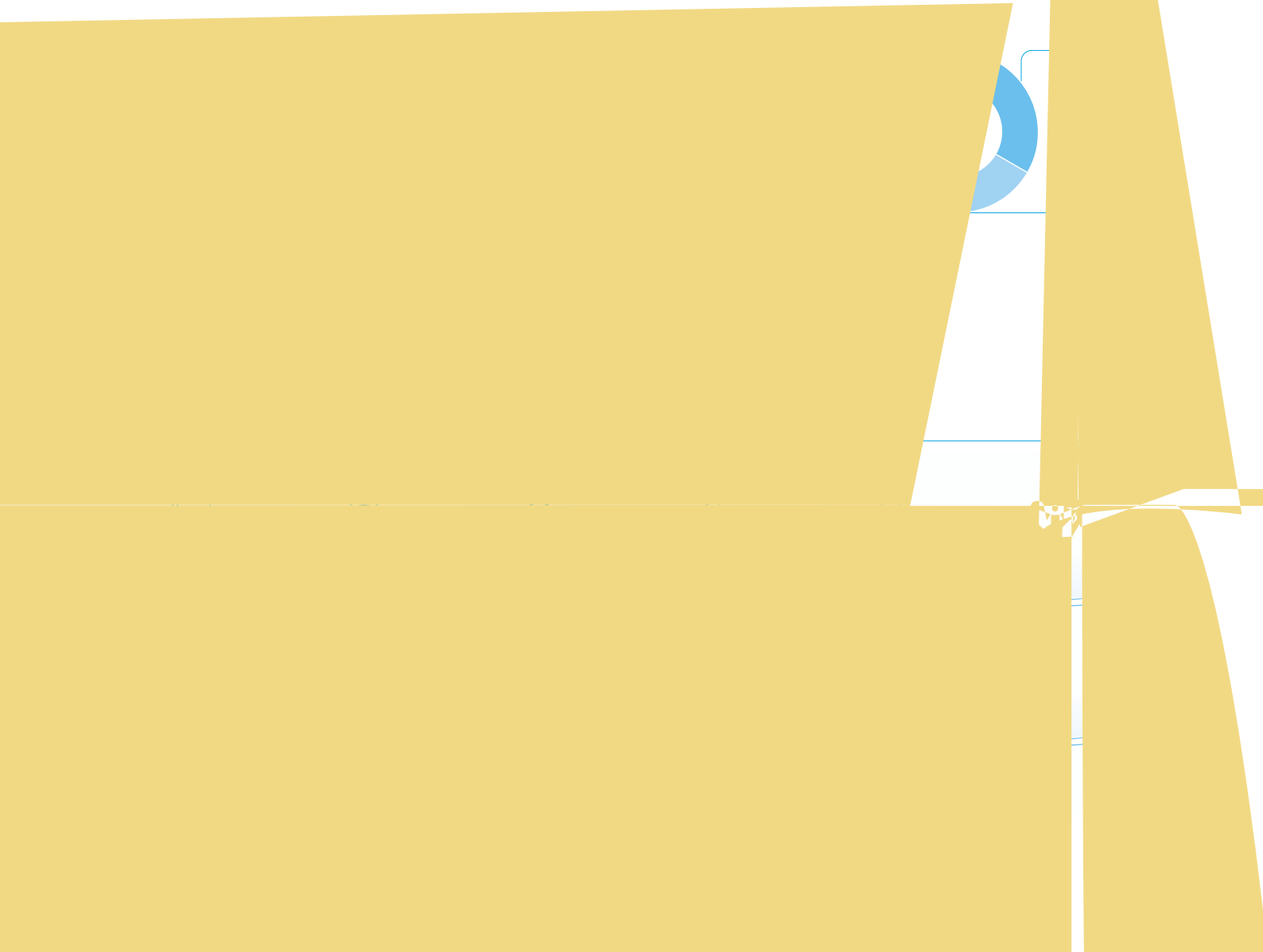


4.16

2022

0.06





EHS

-
-
-
-
-
-
-
-
-

2021-2023	2021	2022	2023
	2,333	3,573	3,022
	2,333	3,573	3,022
	0	0	0

2021-2023	2021	2022	2023
	12	8	12
	12	8	12
	0	0	0
	0	0	0



2023 6

2,400



INNO LIGHT
Innovation Lights Our Future

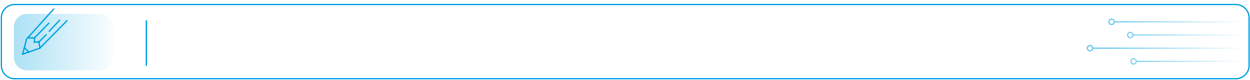
安全月 答题冲冲冲

“人人讲安全 个个会应急”

2023年6月是全国第22个“安全生产月”，主题是“人人讲安全，个个会应急”安全路上，你我同行；珍爱生命，共筑防线。

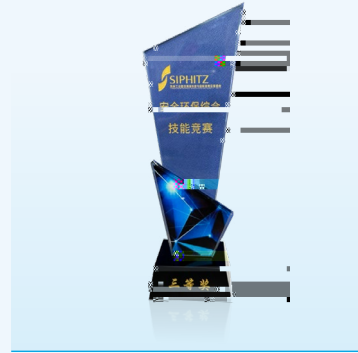
完
一
安
全
防
护
设
施



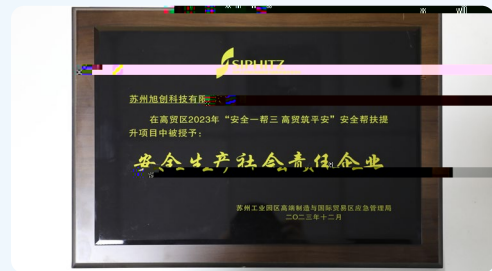


2023 6

EHS

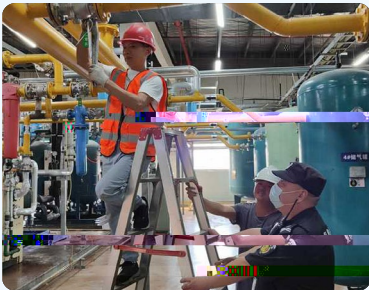
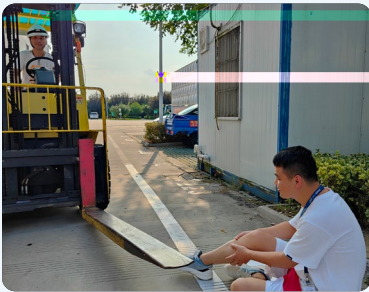


2023 7-11



2023 12





99



99



2023 9

23



2017

2023 12

" 2023 "

4

251

83,262

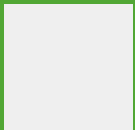
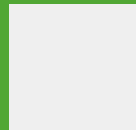
35





.....	48
.....	50
.....	51
.....	54
.....	56
.....	58

SDGs



373.56



14
930

256

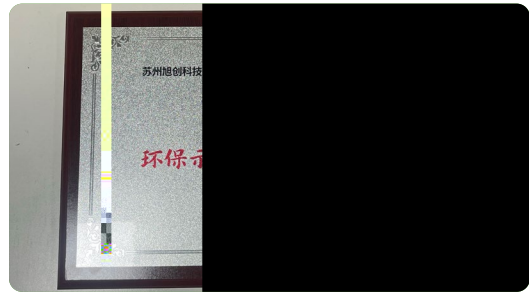
ISO 14001

15



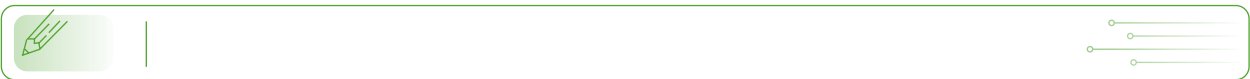
2023 9

2023 9 10



2023 6

2022



-
-
-
-
-
-

EHS

EHS

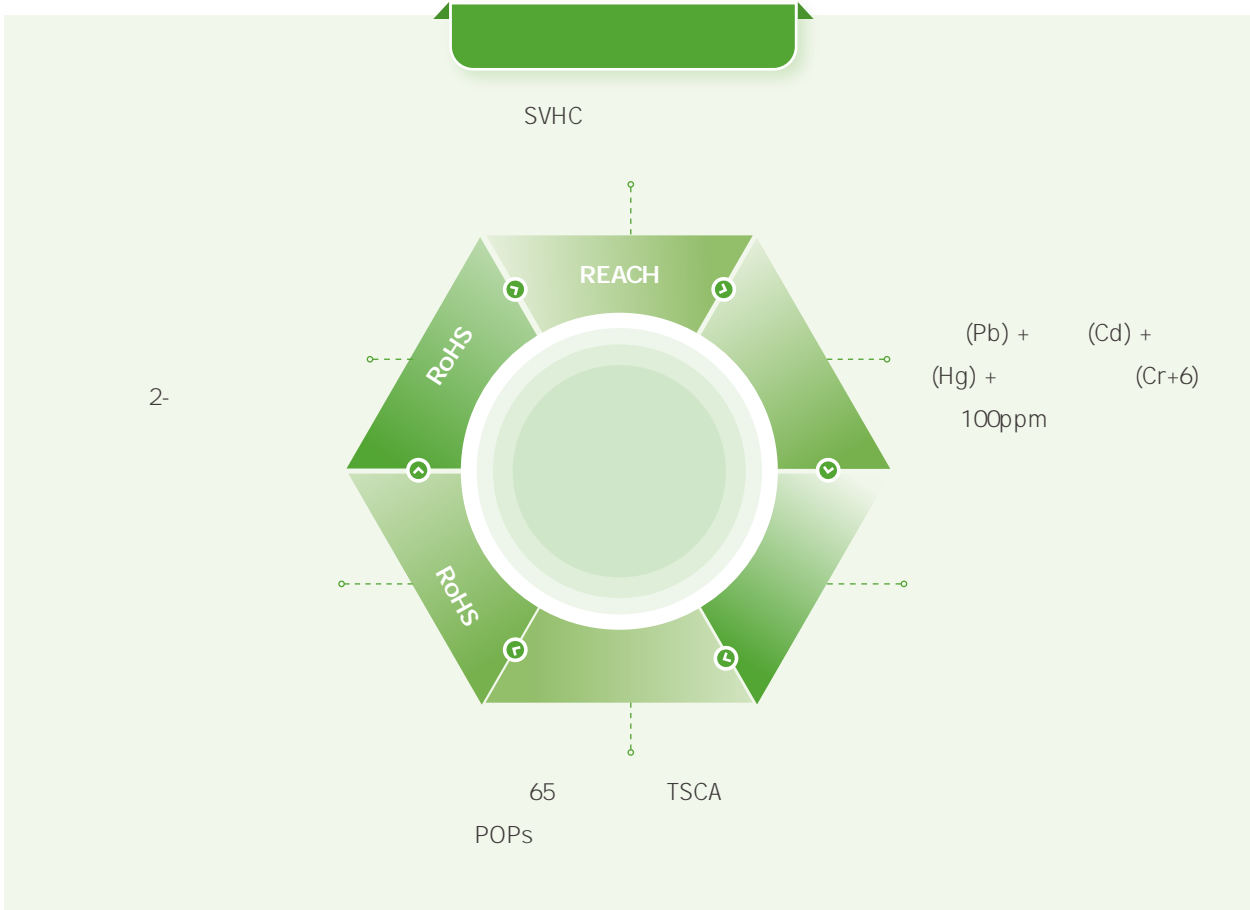
EHS



2023 12

RoHS REACH

50



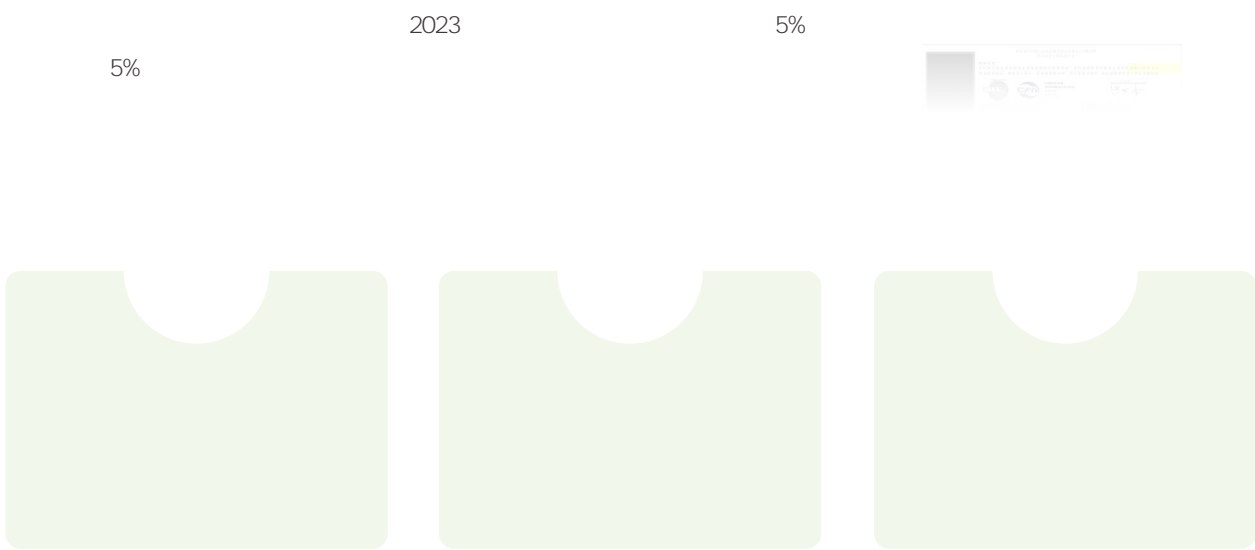
SRM-GP

GPM

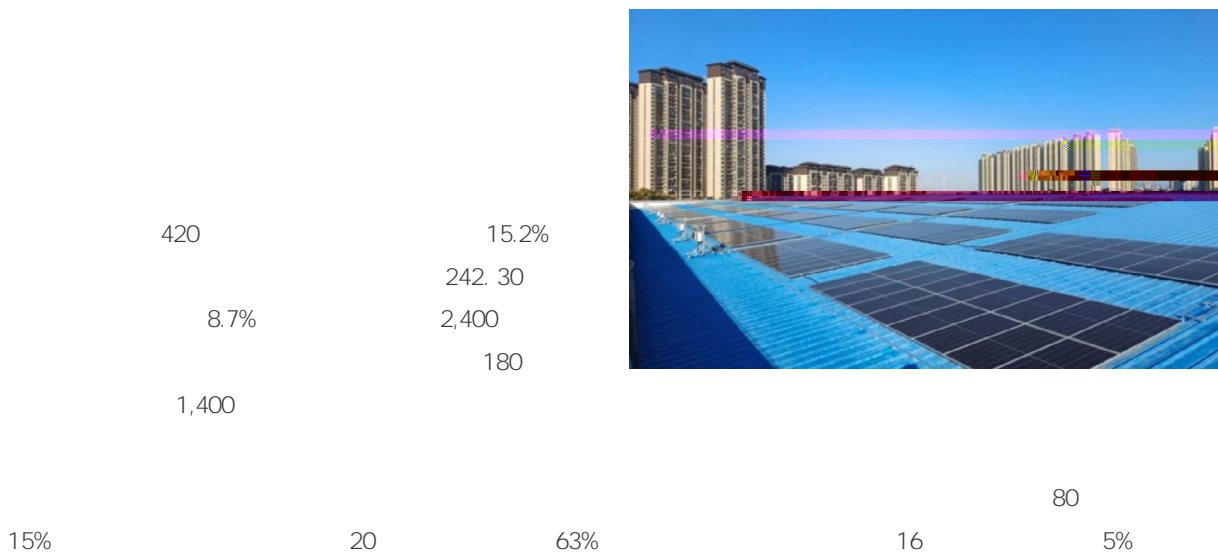
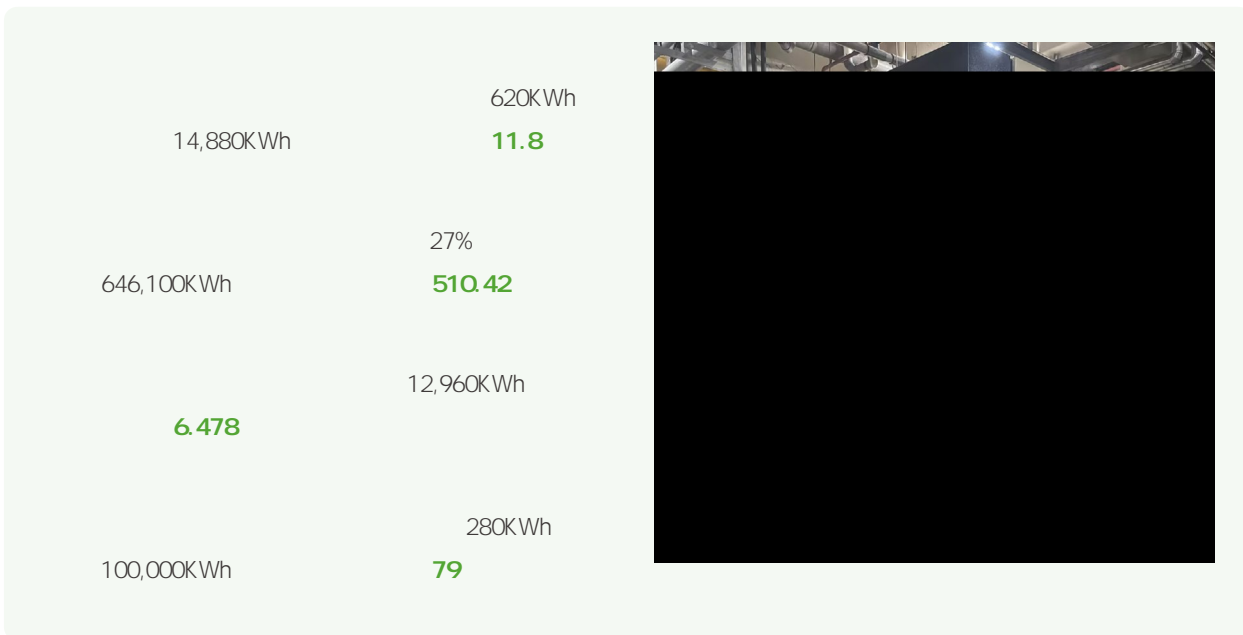
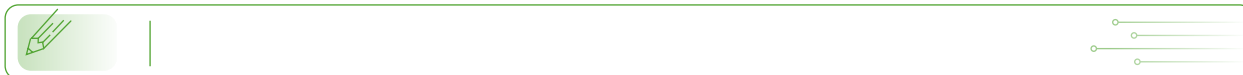
RBA



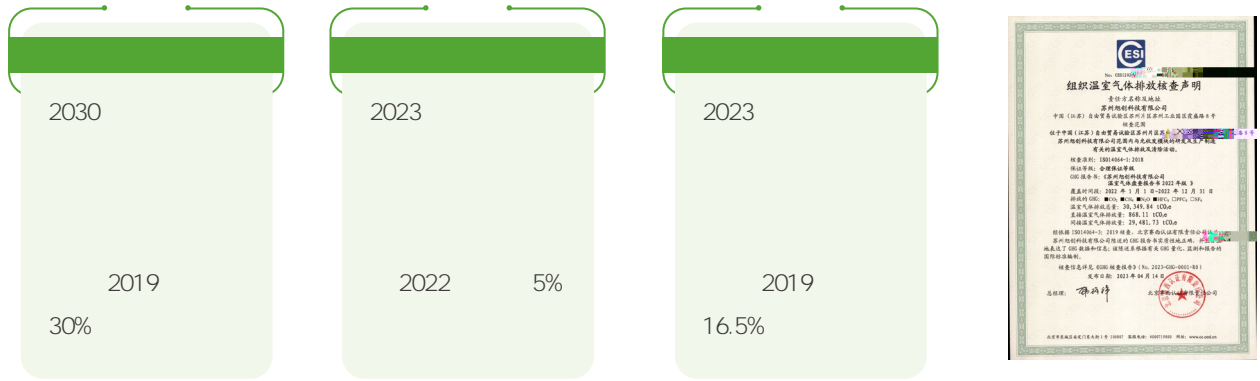
ISO 50001



2021



ESG



ISO 14064

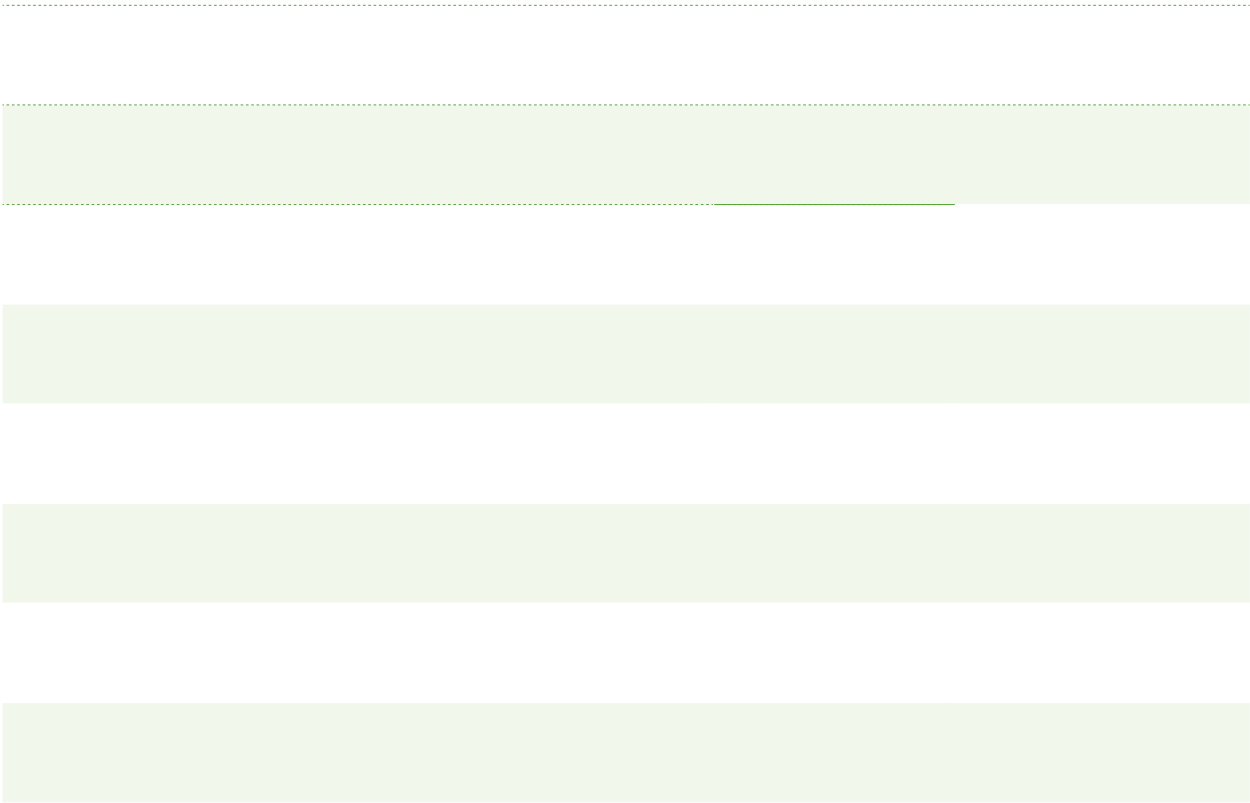
	2021	2022	2023
1	533.04	868.11	1,088.12
2	70,574.07	84,311.80	86,632.18
3	/	160,482.957	*
	71,107.11	245,662.8	/
1+ 2	/	0.092402	0.088344
			0.081844

1. 1
 2. 2
 3. 3
 4.
 5. 2019
 *:2023 3

PH

COD

BOD



2023

2023

A vertical list of five green circular icons, each with a dotted border, connected by downward-pointing triangles. To the right of each icon is a large, empty white rounded rectangular box for text.





2023





	2021	2022	2023
	769,540.48	964,179.48	1,071,798.45
	87,697.71	122,399.09	217,352.77
	1,656,468.08	1,655,698.82	2,000,674.75



	2021	2022	2023
/	114.73	112.61	114.04
/	0.3121577	0.312461	0.411256
1+ 2 /	0.092402	0.088128	0.081844



	2021	2022	2023
	5,583	5,634	6,029
%	48	49	49
	18,303	35,828.5	35,438
	56,584.58	79,216.83	80,938.89

CASS-ESG 5.0

P

P1.1

P1.2

P1.3

P2.1 ESG

P2.2 ESG

P4.1

P4.2

P4.3

G

G1.1

G1.2

G1.3

G1.4

G1.6

G1.7

G1.8

G1.10

ESG

G2.1 ESG ESG

G2.2 ESG ESG

ESG	G3.1	ESG	ESG
	G3.5	ESG	ESG
	G3.6		ESG
	G3.11	ESG	
E			
	E1.1		
	E1.3		
	E1.4		
	E1.7		
	E1.8		
	E2.1		
	E2.2		
	E2.4		
	E2.5		
	E2.10		
	E2.11		
	E2.12		
	E2.14		
	E3.1		
	E3.2		
	E3.3		
	E5.4		
	E5.5		
	E5.6		
	E5.7		

S

S1.1

S1.2

S1.3

S1.4

S1.5

S1.6

S1.7

S1.10

S2.1

S2.2

S2.4

S3.1

S3.2

S3.3

S3.4

S3.5

S3.6

S3.7

S3.8

S3.9

S3.11 /

S5.1 /

S5.4



3-1			ESG
3-2			ESG
3-3			ESG
201-1			
201-3			
205-2			
302-1			
302-3			
302-4			
302-5			
303-4			
303-5			
305-1		1	
305-2		2	
305-3		3	
305-4			
305-5			
306-2			
306-3			
308-1			

GRI

401-1

401-2

401-3

403-1

403-2

403-3

403-5

403-6

403-7

403-8

403-9

403-10

404-1

404-2

405-1

406-1

414-1

416-1

2023

ESG



1.

2.

AA1000AS v3 ISO 14001 ISO 26000 SA 8000 EcoVadis

GRI



1.

2.

AA1000AS v3

3.

4.



AA1000AS v3 2

AA1000AS v3

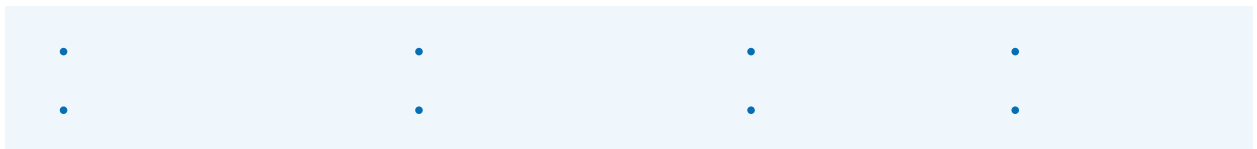


1.

2. AA1000AS v3 2

AA1000AS v3

3.





1.

5.

AA1000

2.

6.

3.

7.

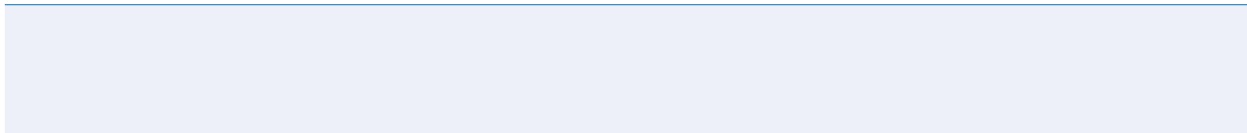
4.

8.



1.

2. AA1000AS v3



3.



021-20740303

esg@infaith.com.cn

388 8

Tina Zhong





中际旭创股份有限公司
Zhongji xuchuang Co., Ltd.

联系地址：山东省龙口市诸由观镇驻地

邮政编码：265705

联系电话：0535-8573360

电子信箱：info@zj-innolight.com

